

PRIMARY EDUCATION SERVICES NETWORKING ORGANIZATION (PESNO)



TEL: 0713- 526533

0767- 526533

STANDARD VII SECOND MOCK EXAMINATION

SUBJECT: SCIENCE AND TECHNOLOGY [05]

DATE: 4TH MAY 2021

TIME: 1HR: 30MIN

CANDIDATE'S NAME: _____

SCHOOL: _____

DISTRICT: _____ **REGION** _____

INSTRUCTIONS:


1. Fill in the prime personal information in the first part of your answer sheet
2. This paper consists of 45 questions with section A and B in four printed pages
3. Answer all questions as per instructions in each section
4. Observe neatness in your workings
5. Shade the correct answer on the OMR answer sheet given for no. 1 to no. 40
6. For no. 41 to 45 write the answers at the back of the (OMR) answer sheet given

SECTION A: multiple choice questions

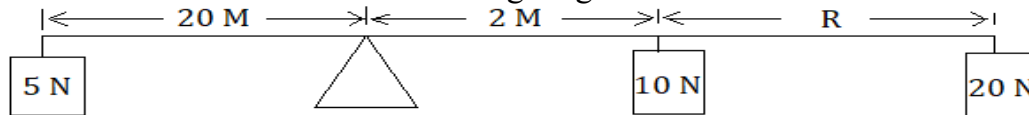
1. Which group of soil among the following is usually sticky?
a. Sand soil b. loam soil c. clay soil d. a soil with small sized rocks e. mixed soil
2. The process whereby water moves from the lowly concentrated solution to a highly concentrated solution through semi-permeable membrane is known as –
a. The flow of dirty water b. matter c. diffusion d. osmosis e. freezing of water
3. The fire that results from flammable liquids like petrol belongs to class _____
a. A b. F c. D d. B e. C
4. Which one among the following is an STD caused by bacteria called Neisseria?
a. HIV b. gonorrhea c. fungus d. syphilis e. trichomonus
5. A wire that is connected to a copper rod with a distance of at least one meter buried in the soil is known as-----
a. Circuit wire b. earth wire c. electricity d. charge e. live wire
6. One of the reasons as to why frogs hide in the soil during the hot period is----
a. To prevent water loss from their bodies b. to avoid enemies c. to lay eggs
d. to shed their skin e. to cool their bodies from heat
7. Fallopian tubes in female reproductive system connect two parts which are _____ and _____
a. Vagina and ovary b. cervix and uterus c. cervix and ovary
d. uterus and vagina e. ovary and uterus
8. Why can fish move easily in water?
a. It has a long tail b. has a streamlined body c. it has hard scales
d. it has many gills e. it has soft fins
9. Which list shows the main characteristics of mammals?
a. Laying eggs, warm blooded and breast feeding b. living on land, cold blooded and flying
c. having hairs, breast feeding and warm blooded d. living in water, laying eggs and eating grass
e. breastfeeding, cold blooded and eating grass
10. How long does it take for the growth of the child in the mother's womb before delivery?
a. 9 days b. 9 years c. 8 months d. 9 months e. 90 days
11. The gas which is produced by bacteria that decomposes waste substances in the absence of oxygen is called _____
a. Biogas b. carbon dioxide gas c. compost d. carbon monoxide e. nitrogen gas
12. Why does kerosene oil float on water?
a. Water is light b. water has low density c. the kerosene has less density
d. the kerosene is more denser e. the density of water is equal to the density of kerosene
13. The device or a special place where waste substances are destroyed using high temperature is known as _____
a. Chemical b. fire c. the machine of fire d. a waste pit e. incinerator
14. Which one among the following diseases is caused by virus?
a. Tuberculosis b. cholera c. malaria d. measles e. trachoma
15. What is the function of the spinal cord?
a. To manufacture bone marrow
b. To deal with involuntary actions
c. To deal with voluntary actions
d. Helps in thinking
e. Is a part where nerves are made
16. Which plants among the following can add nitrate mineral salts in the soil?
a. Cassava and mango plants b. maize plants and bean plants c. legumes
d. legumes and maize plants e. groundnuts and spinach

17. Which problem can happen to a person who will not take safety precaution to this sign?



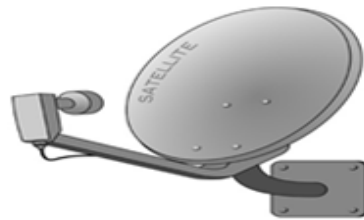
- a. Will be infected with diseases b. can burn with fire c. can get skin diseases and cancer
d. can get accident e. can slip and fall down
18. Which things must be present for iron to get rust?
a. Water and acid b. water and base c. water and carbon dioxide
d. oxygen and salt e. water and oxygen
19. Living things have the following characteristics **EXCEPT**
a. Reproducing and breathing b. moving and responding to stimuli c. growing and moving
d. breastfeeding and eating e. sensing and eating
20. Why can't we see things that are behind the wall?
a. Because light travels in a straight line
b. Because light has higher speed than sound
c. Because light travels in form of waves
d. Because sound has higher speed than light
e. Because there isn't enough light
21. What will happen if plants will not have chlorophyll?
a. Plants will not get water b. plants will not manufacture food c. plants will grow very fast
d. plants will lack energy e. plants will have weak roots
22. If blood test is done of a person suffering from malaria, the blood will be found with microorganism known as _____
a. Virus b. fungus c. bacteria d. plasmodia e. mosquito
23. Which method can be used to extract salt from a solution of salt and water?
a. Evaporation b. to clean the water c. decantation d. to soften water e. to pour the salt
24. Which among the following is not the function of blood?
a. To transport waste products b. to transport gases c. to transport food d. to regulate body temperature
e. to digest food nutrients
25. Which matters among the following are in solid state?
a. Mercury, ice and sand b. ice, sugar and air c. air, steam and water
d. blood, stone and milk e. papers, ice and plastic
26. The following are the characteristics of physical changes **EXCEPT**:
a. Can be reversed to its original state
b. There is no change in weight
c. A new substance is formed
d. Neither heat nor light is produced
e. There is no new substance formed
27. Which of the following things allow heat to pass easily?
a. Iron b. wood c. glass d. plastic e. air
28. This symbol  in electric circuit represents _____
a. Switch b. wire c. resistance d. fuse e. battery
29. Which diseases can you get if the toilet and kitchen are not cleaned?
a. Trachoma and AIDs b. malaria and worms c. bilharzia and fungus d. diarrhea and cholera
e. bilharzia and worms

30. What is the value of “R” in the following diagram?



- a. 2m b. 20m c. 40m d. 1m e. 4m
31. Which thing gets lost when a person vomits?
a. Vitamin b. protein c. water d. air e. fat
32. Why do people who live with HIV need food with a lot of nutrients?
a. They are hungry all the time
b. they have a long term disease
c. their life is too short
d. they need to become fat to avoid stigmatism
e. they need to strengthen their body immunity
33. Which of the following methods does not transmit virus that cause AIDS
a. transfusion of infected blood b. mosquito bite c. sharing of syringes
d. irresponsible sex e. sharing of tooth brushes
34. Which step follows after forming hypothesis during scientific investigation?
a. Collecting data b. carrying out experiment c. to identify a problem
d. to analyze data e. writing a report
35. What are the last three steps in writing a scientific report?
A. Aim, materials, results b. methods, aim, conclusion c. methods, results, conclusion
d. results, materials, aim e. title, aim, materials
36. This type of antenna is called:

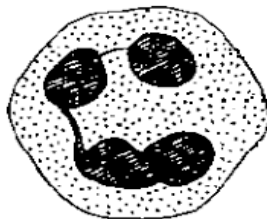
- a. parabolic reflector antenna
b. micro strip antenna
c. array antenna
d. horn antenna
e. wire antennas



37. The type of antenna that includes a combination of many antenna working together as a single antenna are called:-
a. Micro strip antenna b. reflector antenna c. array antenna
d. aperture antenna e. wire antenna
38. The following are the advantages of using email **EXCEPT**:
a. Transports virus b. easy to send c. there is sharing of information d. it is fast e. low cost
39. One among the following is not a search engine:
a. Google b. yahoo c. Bing d. answers. Com e. email
40. In a workbook the currently selected cell for entering or editing data is called.
a. Active cell b. cell bar c. menu d. save as e. save

SECTION B: SHORT ANSWER QUESTIONS

41. The living blood cell shown in the diagram below is called _____



42. Calculate the work done by a man who used a force of 15 N to pull a load through a distance of 12 meters
43. Acid + metal \longrightarrow salt + Q
What does letter Q represent?
44. Which gas is found abundantly in the atmosphere?
45. Which part of a television is used to display pictures?